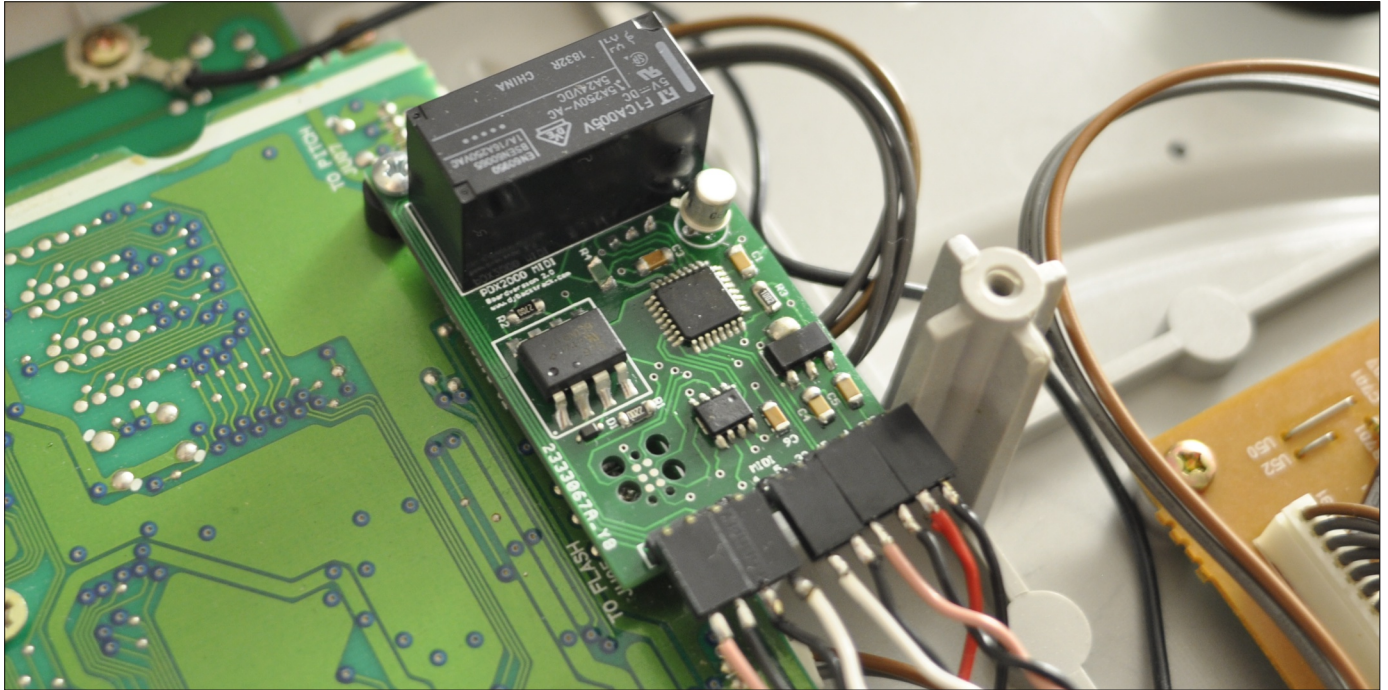


# PDX-2000 MIDI MOD v2



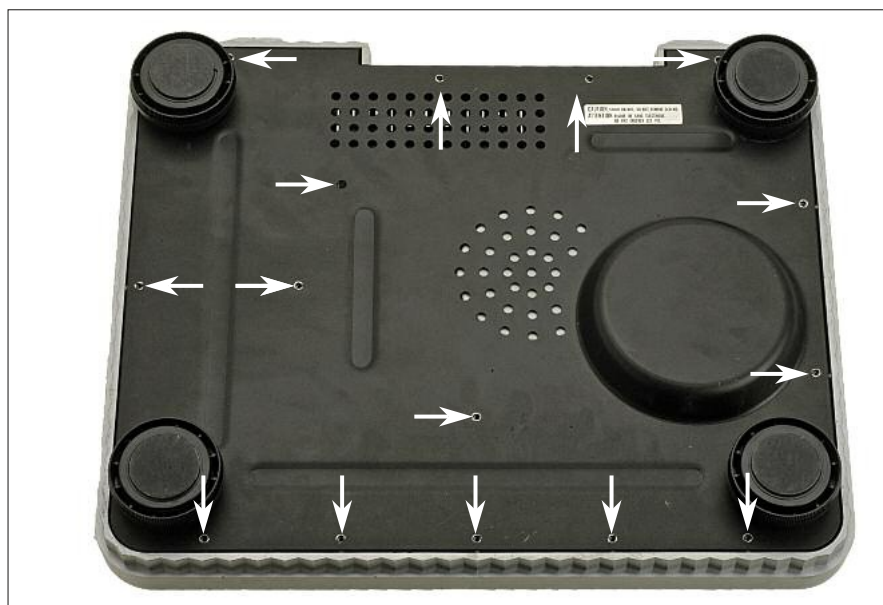
**I'm not be responsible in any way if you damage your turntable during the installation!**

This mod requires some knowhow about soldering.  
If you have no experience with soldering and electronics please ask someone who does to do the mod.

Contact me at [contact@djbacktrack.com](mailto:contact@djbacktrack.com) with any questions.

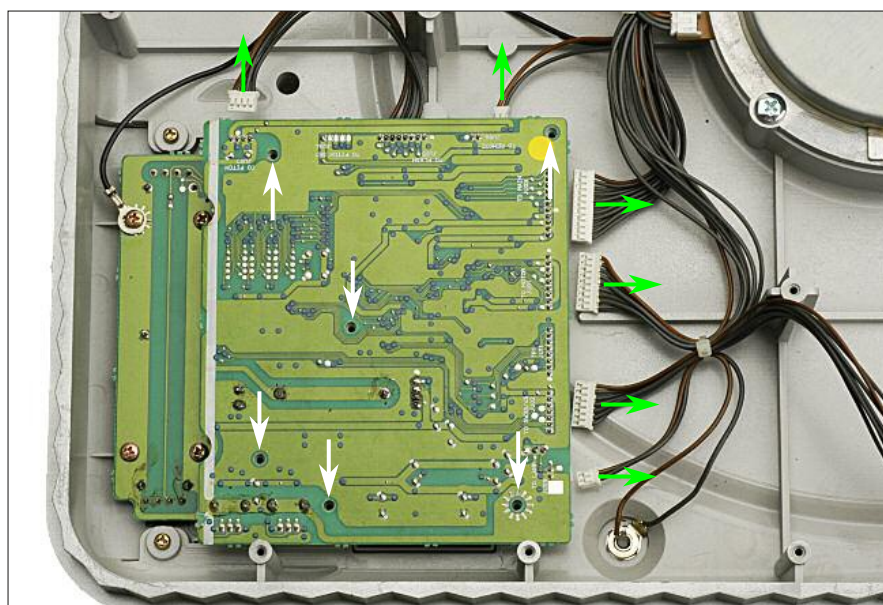


Remove the ultrapitch fader knob



Flip over your turntable. If you don't have anything good to support it with use beer-cans at the corners.

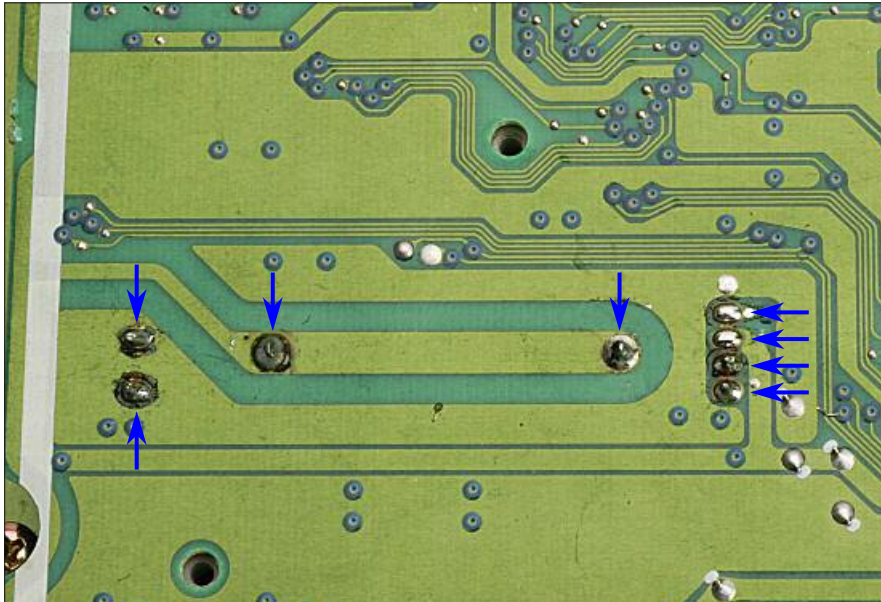
Remove the 15 screws and pull away the baseplate.



Disconnect all cables going to the pitch-PCB.

Remove the screws and remove the PCB.





Here comes the tricky part. Use the included desoldering braid and remove the solder on the points marked in the picture.(See here how to use:

<http://www.youtube.com/watch?v=AcbezX8TrOU>).

If you have a desoldering pump use that. Its much easier.(Go buy one. Its a good investment.)

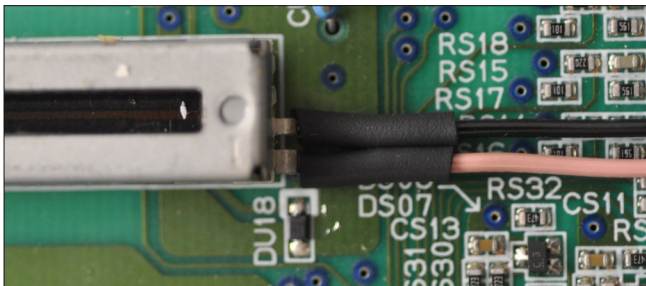
If you can't get it free. Heat up the points and pull gently until you can remove the fader.

Remove the slidefader.



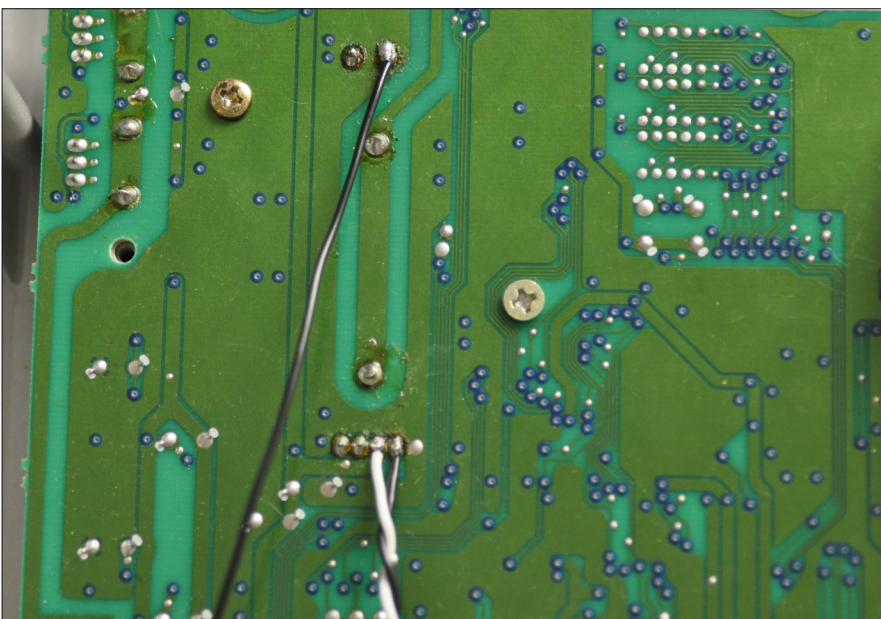
Position your fader as shown in the picture and carefully bend the two legs forward.

Solder the wires as shown in the pictures. Use the included shrink tube on the fader pins.



Put the fader back and resolder it to the pitch-PCB.

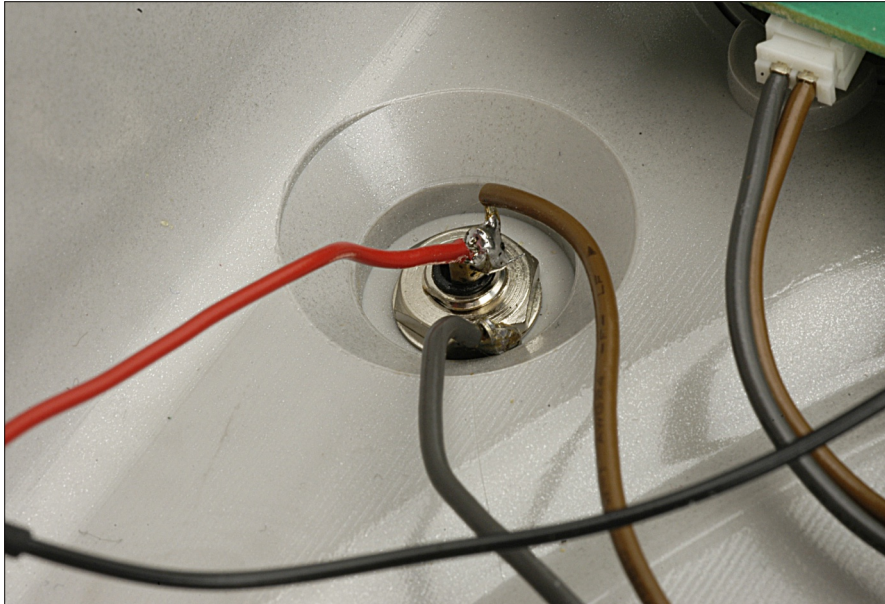
Remount the PCB.



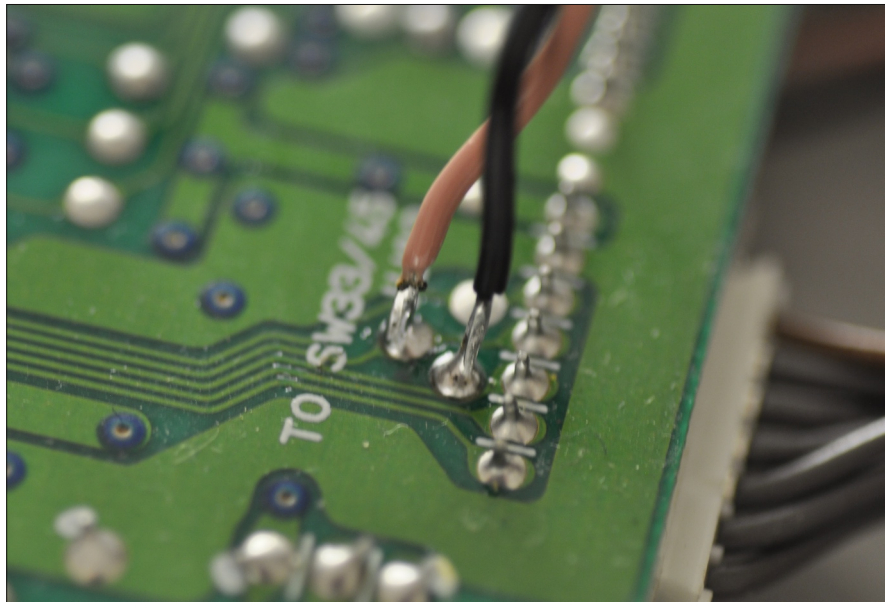
Solder the wires like shown.

The top black cable is ground and belongs with the power wire harness(Red/Black).

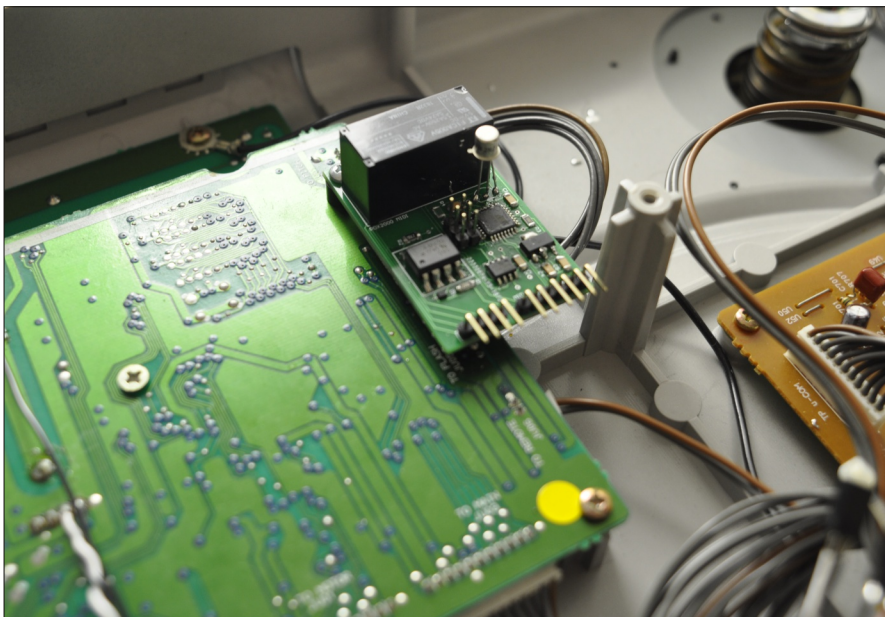




Solder the red cable to lamp socket like shown. Make sure you dont short it to ground

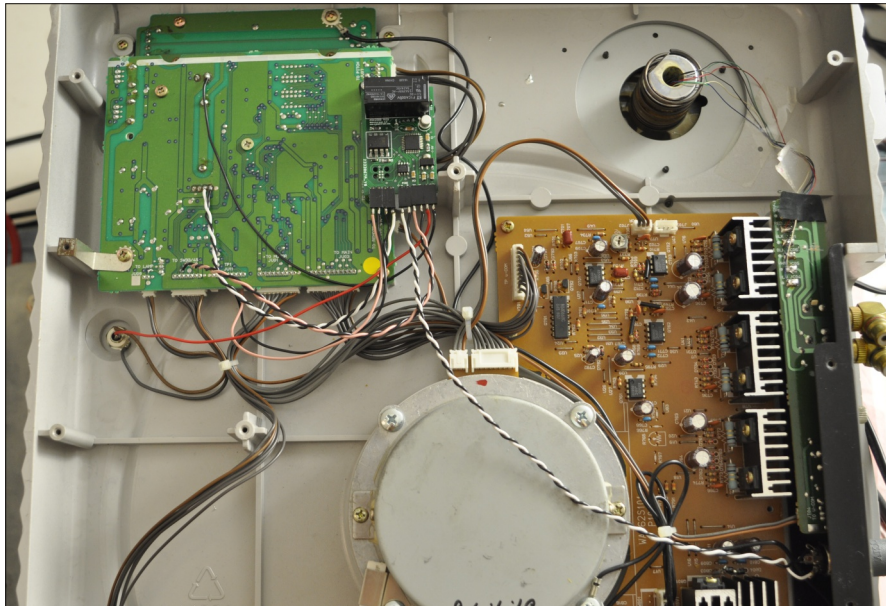


Now solder in the other black and pink cable (its twisted) like this to the mainboiard PCB. On the pcb it reads "TO SW33/45"

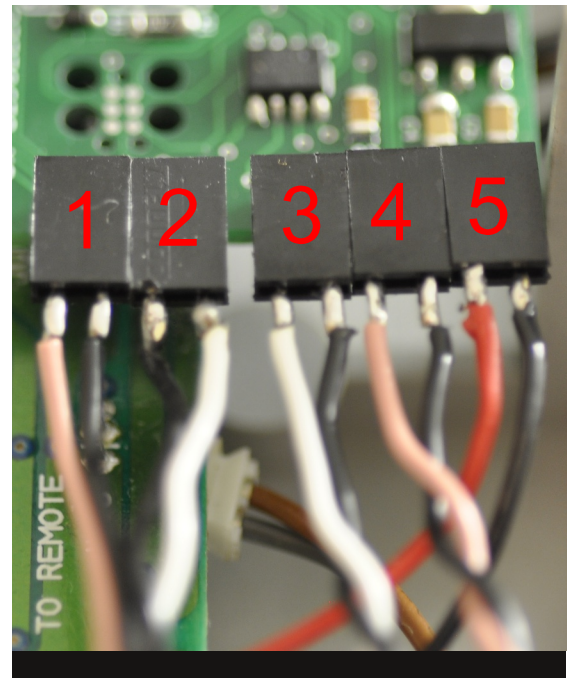
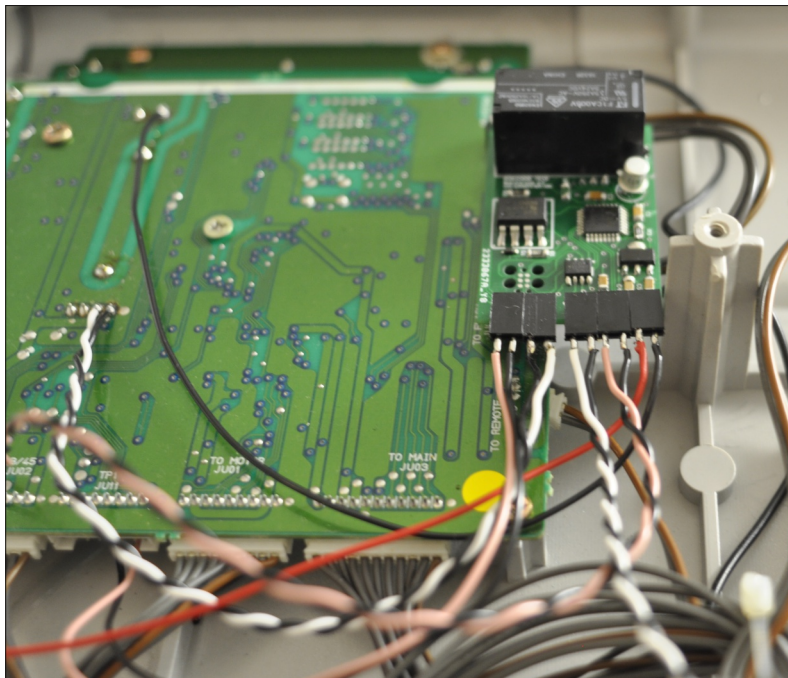


Mount the mod PCB. Put the washer under the PCB and use the included screw.





Connect the wires like shown in the pictures.



You can place the midi connector where ever you want. But a good place is the backplate

- 1: Pitchfader
- 2: Board PCB
- 3: MIDI
- 4: Button PCB
- 5: Power

3,4,5 will come in one 6pin connector.

### Using the mod

Hold 33 and 45 button for 3 seconds to switch between MIDI and normal mode.

You will hear a slight click every time it switches mode.

The mod always starts in normal when you power on.