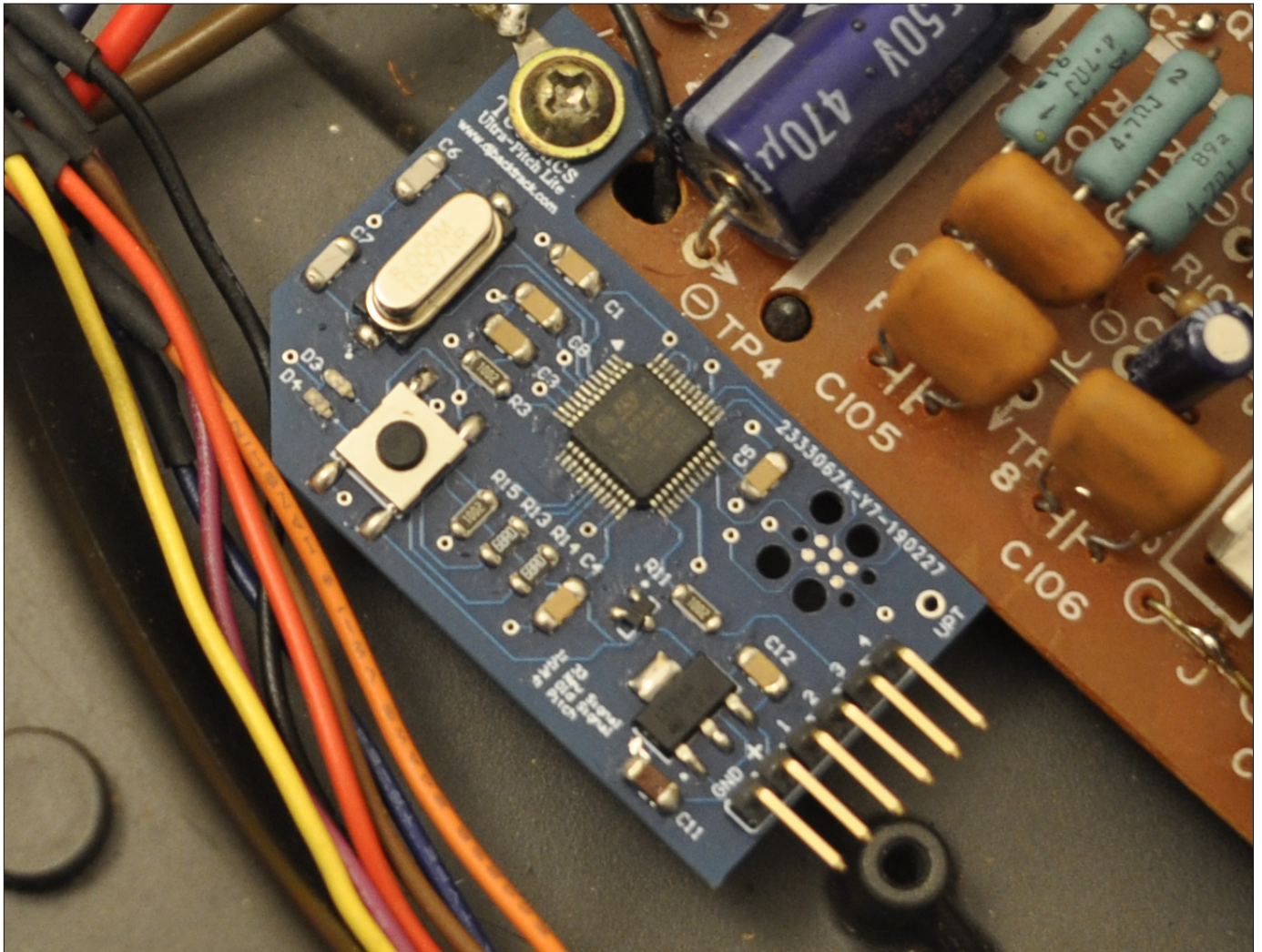


# Technics ultra pitch mod lite

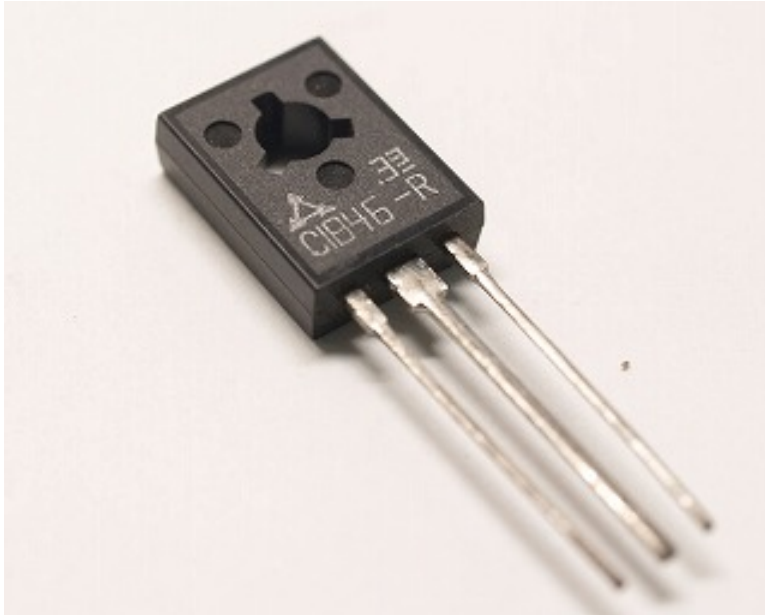
## Instructions for installing

I'm not be responsible in any way if you damage your turntable during the installation or in using the mod.

This mod requires some knowhow about soldering.  
If you have no experience with soldering and electronics please ask someone who does to do the mod.



# Note on Q201 transistor



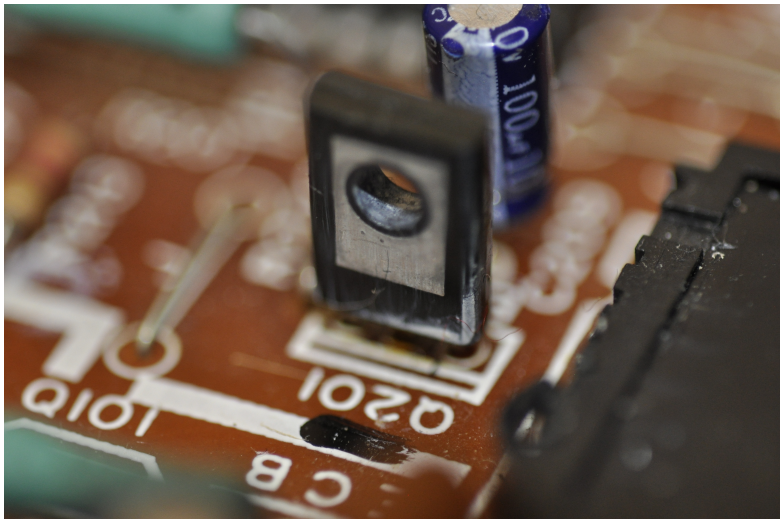
Technics Q201 is a NPN transistor called 2SC1846. It supplies the IC301 and AN6680 with power. If you google "Technics Q201" you can see it's a regular cause of the "out of control speed" issue.

Why the Q201 fails, I do not know. Maybe because of age or other components in circuit that change character over time. If your Q201 is close to failing connecting the ultra-pitch mod can push it over the edge and break it.

This is very rare but I will include an equal transistor replacement in every kit. You don't have to replace it but it might be good

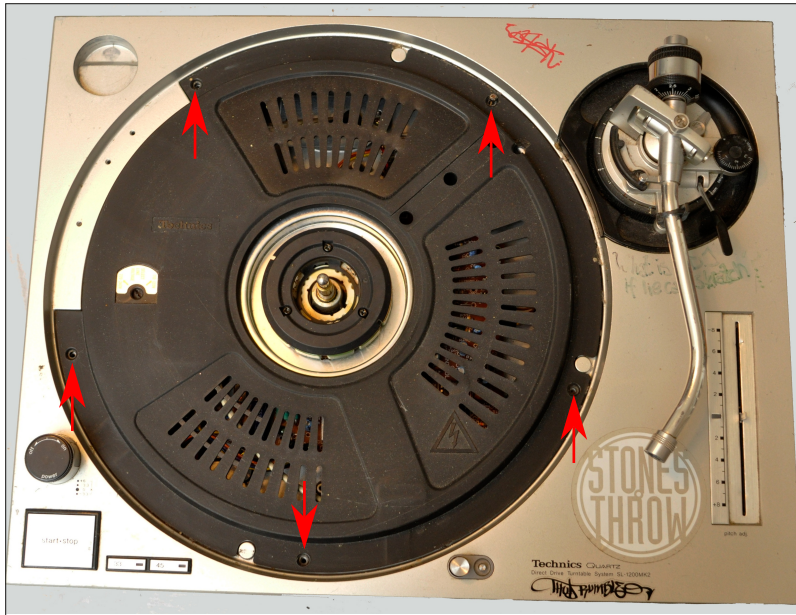
2SC1831	2N6056	3-97
2SC1832	MJ10009	3-451
2SC1846	MJE181	3-589
2SC1847	MJE181	3-589
2SC1848	MJE182	3-589

The replacement for 2SC1846 is a MJE181. They share the same characteristics and is a recommended replacement.

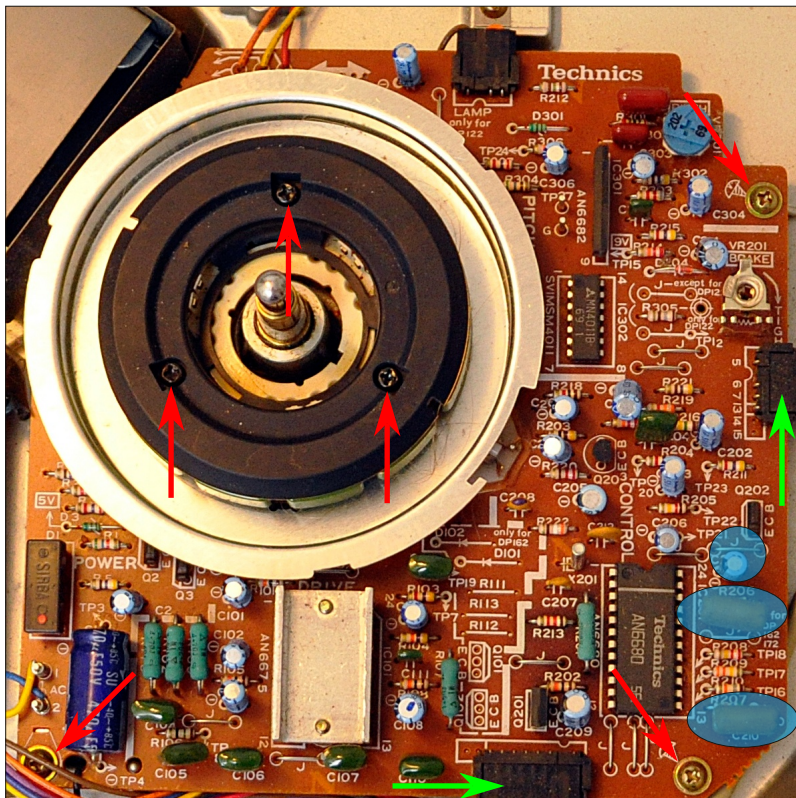


Replacement installed



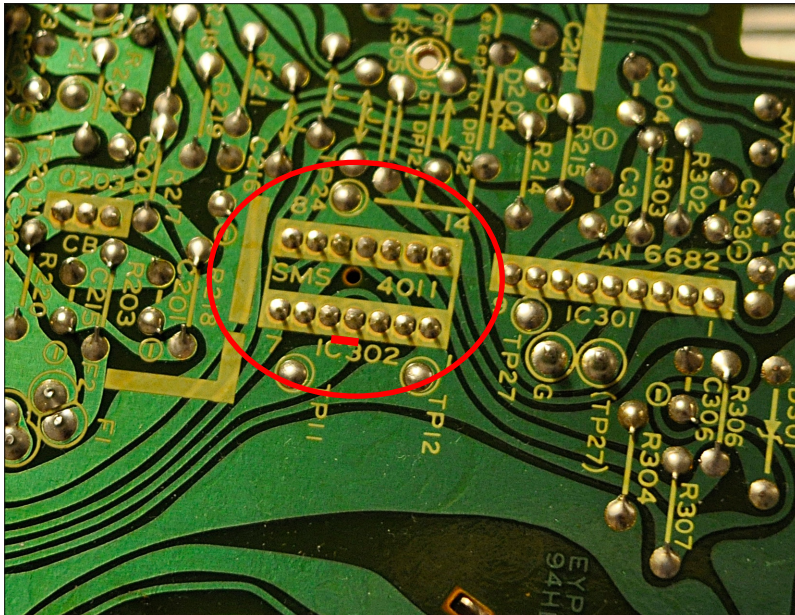


1. Remove the platter (just pull).
2. Remove the five screws holding the cover.
3. Remove the cover.
4. Remove the pitchfader knob



1. Remove the connector to the pitch fader and the buttons.
2. Remove the three screws holding the PCB.
3. Remove the three screws holding the stator. Also remove the plastic cover. (Be a little careful so you don't destroy the thin wires on the inside of the stator.)
4. Flip the PCB over and meanwhile remove the spindle.
5. Desolder C210 and C211 and replace it with the two capacitors (the blue ones) included with the kit.
6. Remove C212 and replace it with the black capacitor included in the kit. Make sure you place the stripe (minus pole) on the capacitor in the same way it was mounted before. (Minus is facing the stator.)

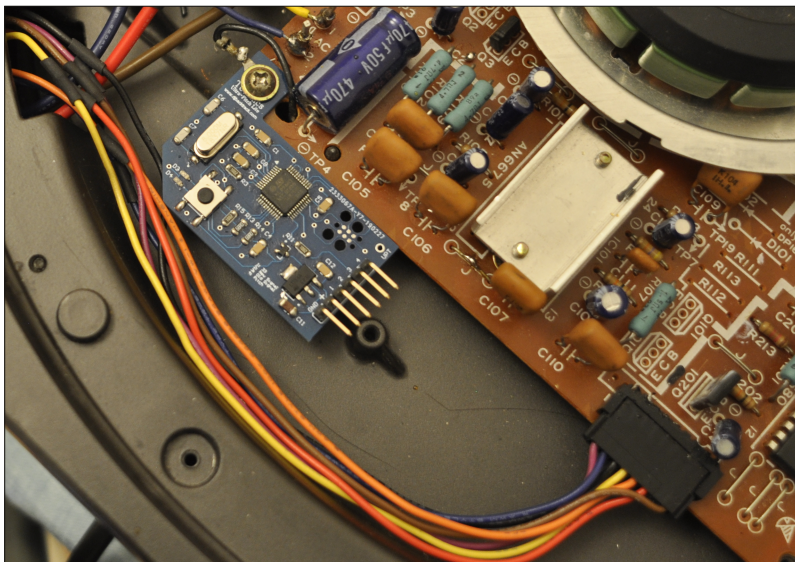
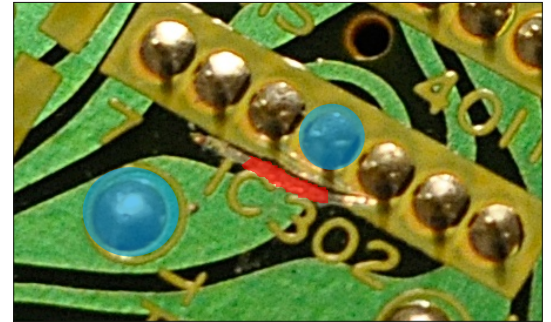




1. Cut the trace like shown in the picture below.

(Between Pin 4 on IC302 and TP11)

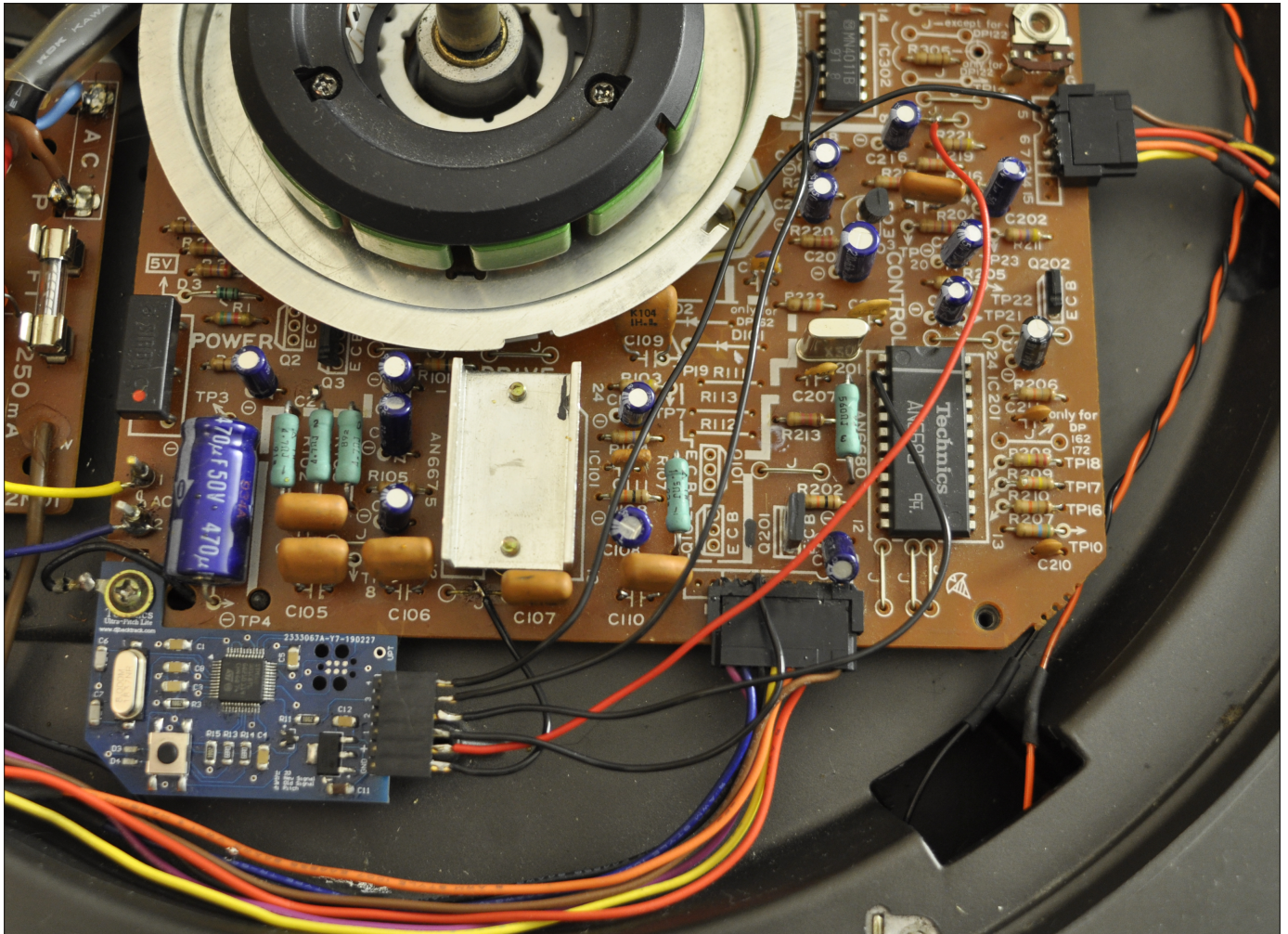
2. If you have a multimeter check that Pin 4 and TP11 are not connected anymore



1. Reassemble the PCB and put the connectors and screws back except the one used for mounting the mod-PCB in the next step.

2. Mount the mod-PCB as shown. Put the ground ring on top of pcb when mounting it with the screw.





Solder in the cables

Black. (GND) solder it to the bridge (J) just under AN6680.

Red. (+) The bridge next to R221

1. Pin 3 on the button connector

2. Pin 2 on IC201

3. Pin 4 on IC302

4. Pin marked "5" on the pitch fader connector

Done. Before putting the cover and platter back do the pitchfader calibration. Look at the videos or flowchart on [djbacktrack.com](http://djbacktrack.com)